

**Beyes**<sup>®</sup>  
*The Next Standard*

# Comfortek<sup>®</sup> X3



## Comfortek<sup>®</sup> X3 Series

Beyes Comfortek<sup>®</sup> X3 Series represents the best-in-class dental operating system.

Engineered and built to industrial standards using advanced production processes, the Comfortek<sup>®</sup> X3 Series delivers high quality, ergonomic design, and exceptional value. Tailored for dental professionals, it enhances workflows, improves treatment efficiency, and elevates the working environment.



**Unsurpassed Value**



**Ergonomic Design**



**High Quality**



The Comfortek® X3 is designed and built to meet industrial standards, utilizing an advanced production process to deliver superior quality for stable and reliable performance.

Equipped with high-performance motors, the Comfortek® X3 ensures smooth operation with minimal noise. Its ergonomic design, along with the seat and backrest-linked chair (where the seat and backrest move in sync), further enhances patient comfort.

- Floor-standing water unit, rock-solid and stable base
- Ergonomic design, with seat and backrest linked chair
- Efficient, with precision control of seat position



High Standard Construction

Designed and built to meet industrial standards using an advanced production process, both the instrument arm and lamp arm are constructed from aluminum profiles, offering high strength while remaining lightweight.



Floor-standing Water Unit

A uniquely designed floor-standing water unit greatly improves chair stability.

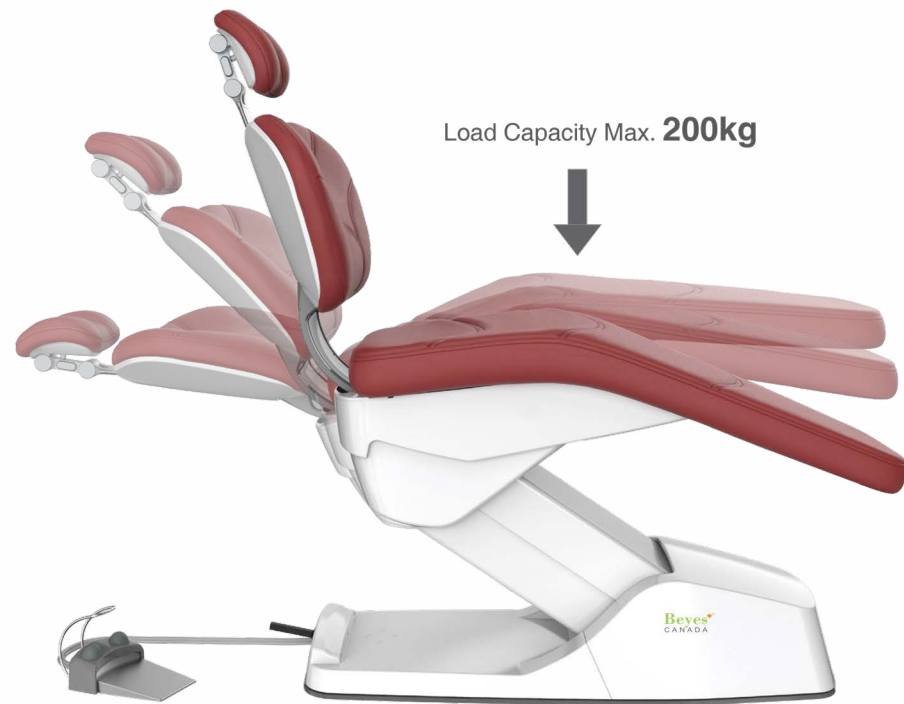




**Seat and Backrest Linked Movement**

Synchronised seat and backrest movement enhances patient comfort.

Ultra-low chair position supports easy patient access.



**Comfort Headrest**

With double-articulated headrest and comfortable seat, height can be raised and lowered freely in the range from 380mm to 780mm, including the last-seat-height memory function. It can be adjusted for the elderly, pregnant women and other patients with limited mobility to receive treatments.



**Swivel Armrest**

Right armrest swings forward for easier patient access. Provides secure grip to reduce patient anxiety and improve comfort.



Upgraded Dentist Element

Available in both hanging hoses and continental versions.

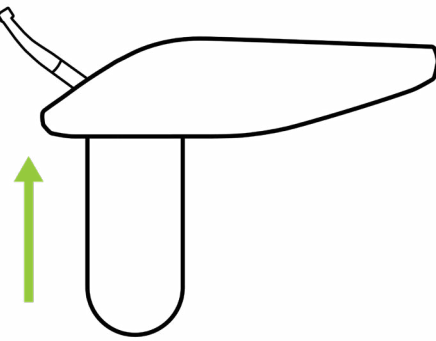
Chair-instrument interlock design supports various instruments including motors and scalers.



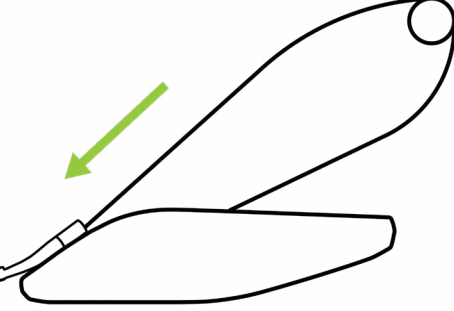
Dentist Element Style



Traditional (Hanging Hoses) Version



Continental (Whip Arm) Version





Hygienic Design

Removable suction filter kit and 360° rotatable stainless-steel water outlet for easy cleaning and disinfection.

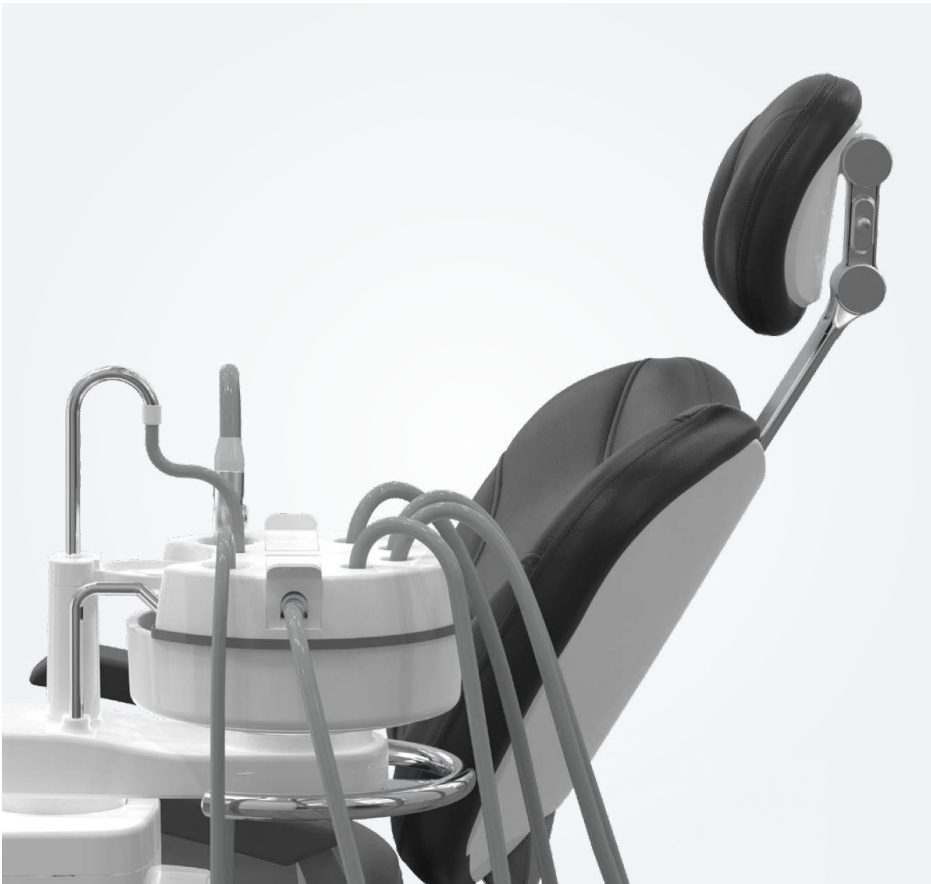


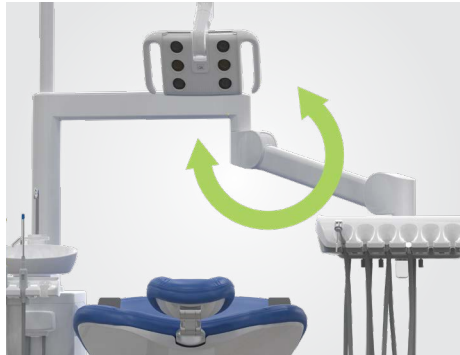
Automatic Flushing and Disinfection System with Hygiene Holder

Our system offers a fully automatic flushing and disinfection process for all instrument hoses and suction lines. Simply connect the instruments to the hygiene holder and initiate the cleaning program — the system will automatically complete the flushing and disinfection cycle with no manual intervention required.

This solution ensures thorough internal cleaning, minimizes infection risks, and simplifies daily maintenance. The hygiene holder keeps all hoses organized and properly positioned for maximum cleaning efficiency.

- One-touch activation, fully automated process
- No need to disassemble hoses for disinfection
- Deep internal flushing for thorough cleaning
- Enhances clinic hygiene standards
- Reduces daily maintenance workload





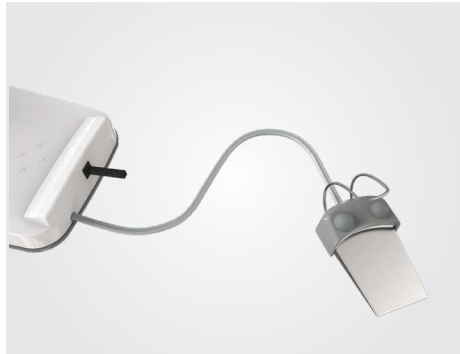
Harmonized Movement

Lightweight, maneuverable arm with one-hand operation enhances precision and efficiency.



Main Switch

Controls air, water, and electricity to prevent standby accidents and extend product life.



Proportional Foot Control

The proportional foot control can flexible adjust the operating speed of instruments.

2 Optional Positions

Wide swivel cuspidor bowl and assistant element provide maximum treatment space with two installation options.



Doctor and Assistant Seating

Intelligent Flexible Backrest

The backrest of the operator stool is designed with an adaptive swing range, allowing slight self-adjustments to better conform to the dentist's posture and movements, providing enhanced support and greater comfort during long procedures.

Ergonomic Curved Backrest for Superior Support

The ergonomically curved backrest fits the natural contour of the human spine, delivering optimal support and reducing fatigue.

Anti-Slip Seat Design with Thigh Pressure Relief

The front side of the seat cushion is raised to prevent the doctor from sliding forward during the treatment. The hips and legs are curved to prevent compression for extra comfort when you move and also provides stability.







### Dimmable Sensor LED Light

Adjustable color temperatures (measured in Kelvins) with luminance memory.

Three-axis adjustment for optimal positioning.

Automatically switches off when the chair moves to protect patient comfort.





Multimedia PC System

1 Monitor Arm

Install either a monitor, TV, or all-in-one built in PC system of your choice on this stable media arm on your modern operator. The monitor arm comes in two choices, the basic arm or the extended version, illustrated in the pictures.

2 Canaview Intraoral All-in-One System

An all-in-one PC system with high resolution display to be mounted directly onto the monitor arm to enhance patients' experience. Including a crystal clear intraoral camera which is integrated into the PC system, available to assist with operations and patient care.



Optional Configurations



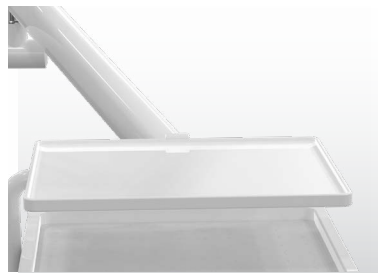
Monitor mount on additional pole



Canaview Intraoral All-in-One System



Aistant Tray



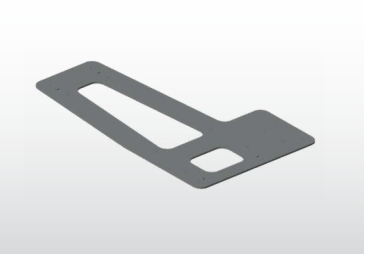
Secondary Tray



Seamless Upholstery



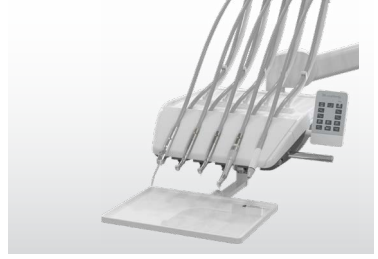
Disinfection System with Hygiene Holder



Additional Steel Base Plate



Proportional Foot Control



Whip Arm Dentist Element



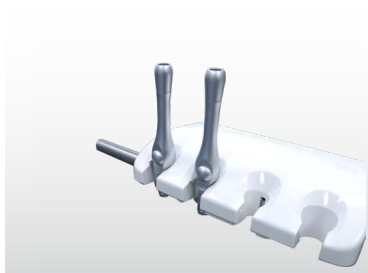
Handpiece Light Source System



Electric Motor



Curing Light



Second HVE Suction



Quick Disconnect (Air or Water) x1



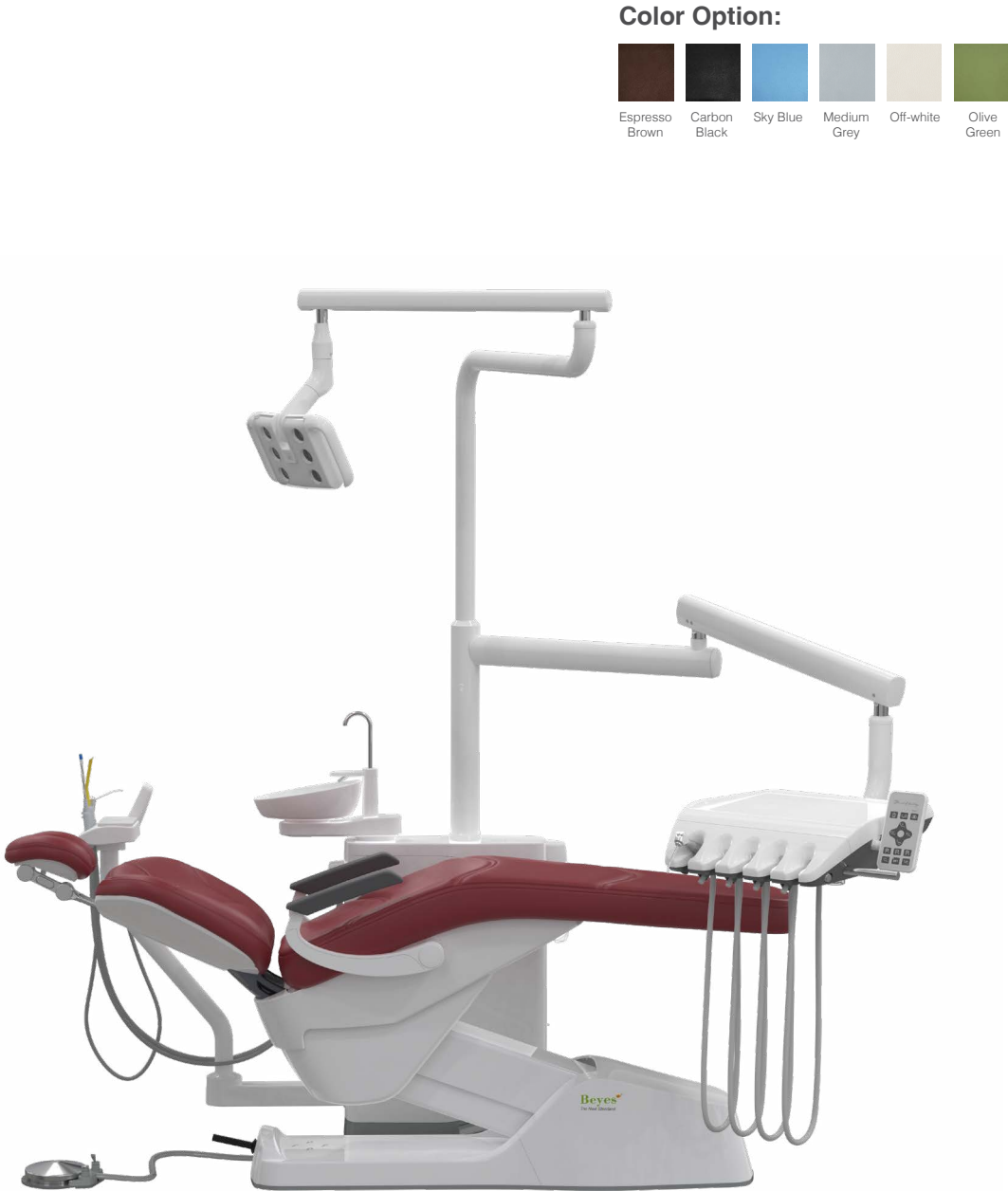
Quick Disconnects (Air and Water) x2

and more.....

# Comfortek® X3 Expert

Dental Operating System

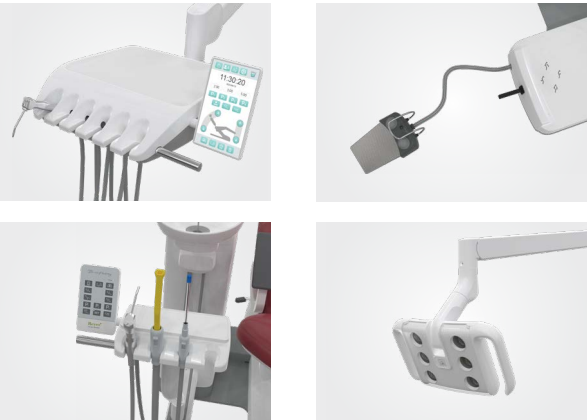
- Includes:**
- Stitched upholstery design
  - **Synchronized movement of backrest and patient chair**
  - **Premium right armrest swing-able**
  - Flexible delivery system with control panel
  - **3 programmable memory positions**
  - Built-In LED scaler
  - **4 instrument position on premium swiveling assistant side with memory positions**
  - Removable and 360° rotatable stainless water outlet
  - M7 LED light
  - Main switch for all (air, water and electricity)
  - 4-way foot switch
  - **Disc Foot Pedal with Water ON/OFF Switch**
  - **Dentist and assistant stool**
  - Premium color collection
  - 8 years warranty



# Comfortek® X3 Master

Comprehensive & Advanced Technology

- Includes:**
- Stitched upholstery design
  - Synchronized movement of backrest and patient chair
  - Premium right armrest swing-able
  - **Luxury operating light & dentist table arm**
  - **Flexible delivery system with Luxury Touch Display Control Panel**
  - 3 programmable memory positions
  - **Heavy-duty aluminum dentist table**
  - **Two 6-Pin fiber-optic tubing**
  - Built-In LED scaler
  - 4 instrument position on premium swiveling assistant side with memory positions
  - Removable and 360° rotatable stainless water outlet
  - M7 LED light
  - Main switch for all (air, water and electricity)
  - 4-way foot switch
  - **Proportional foot control**
  - Dentist and assistant stool
  - **Luxury color collection**
  - 8 years warranty





Comfortek X3 Configurations

	Expert	Master
CHAIR		
Synchronized movement of backrest and patient chair	√	√
Backrest Collision Protection	√	√
Legrest Anti-Collision	√	√
Cuspidor Collision Protection	√	√
M6 Electric Motor System (Lifting capacity up to 200 kg)	√	√
Premium Left Armrest	√	√
Premium Right armrest swing-able	√	√
CONTROL PANEL		
Main Control Panel	√	
Luxury Touch Display Control Panel		√
Premium Assistant Control Panel	√	√
WATER SUPPLY		
Fresh water bottle with switch to public water supply	√	√
FOOT CONTROL		
Disc Foot Pedal with Water ON/OFF Switch	√	
Proportional foot control		√
OPERATING LIGHT		
M7 LED Light	√	√
ASSISTANT ELEMENT		
4 instrument positions	√	√
Saliva ejector and HVE	√	√
Built-In LED curing light	o	o

√: Included   o: Optional Configurations

	Expert	Master
DENTIST ELEMENT		
5 instrument positions	√	
6 instrument positions		√
Heavy-Duty Aluminum Table		√
Height-adjustable with pneumatic brake	√	√
Handpiece fiber-optic system including 6-pin tubings	<input type="checkbox"/> 1pc <input type="checkbox"/> 2pcs <input type="checkbox"/> 3pcs	<input checked="" type="checkbox"/> 2pcs <input type="checkbox"/> 3pcs
Built-In electric Micromotor	o	o
Built-In LED Scaler	√	√
Auxiliary Instrument Tray table	o	o
OPERATING LIGHT & DENTIST TABLE POLES		
Standard pole for operating light & dentist table arm	√	
Luxury operating light & dentist table arm		√
MONITOR ARM & MULTIMEDIA SYSTEM		
22" All-in-One PC	o	o
Monitor Pole I (Monitor Arm mount on additional pole)	o	o
UPHOLSTERY		
Seamless Upholstery	o	o
Stitched Upholstery	√	√
UPHOLSTERY COLOR		
Premium Collection	√	
Luxury Collection		√
DENTIST STOOL		
	√	√
ASSISTANT STOOL		
	√	√

Upgraded Materials

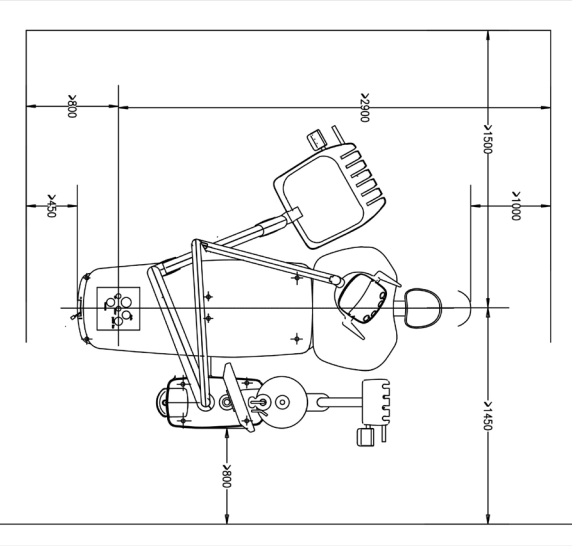
Upgraded materials: durable, easy-to-clean, high-density cushioning.



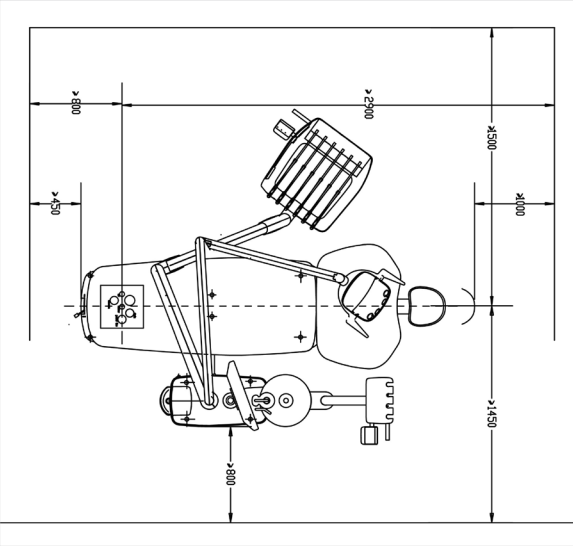
Color



Space Requirements



W/ dentist element in hanging hoses version (mm)



W/ dentist element in whip arm version (mm)

Technical Specifications

Rated Voltage	110-120V AC / 220-230V AC 60Hz/50Hz
Water Pressure	0.2-0.4 MPa / 2.0-4.0 bar
Water Flow*	≥5 L/min
Air Pressure	0.60-0.80 MPa / 6.0-8.0 bar
Air Consumption*	80 L/min
Suction machine	≥255 L/min (with central suction)
Load capacity of patient's chair	Maximum 200 kg
Moving range of patient's chair	480-780mm



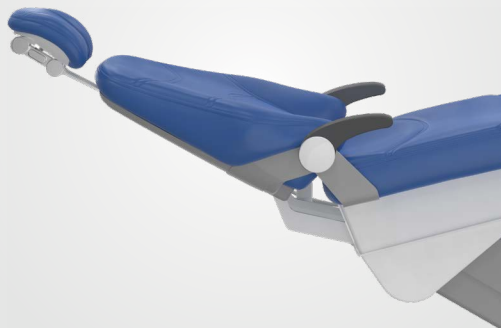
**Beyes**  
The Next Standard



Beyes is the largest Canadian dental handpiece manufacturer with its corporate office located in Toronto. By taking advantage of the highly educated workforce and well-established manufacturing chain in Southern Ontario, Beyes has revolutionized the dental industry with groundbreaking advancements for precision dental instrumentations.

Our Vision: To create “The Next Standard” for dentistry.

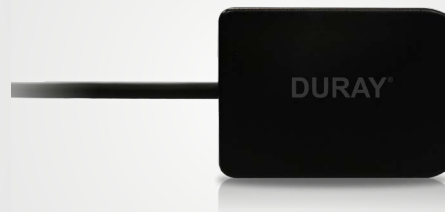
## Comprehensive Product Portfolio



Treatment Centers



Electric Motor



X-Ray Sensor



LED High Speed Handpieces

**Beyes Dental Canada Inc.**  
55 Laurier Drive  
Morrisburg, Ontario  
K0C 1X0, Canada  
**Tel:** 1-855-603-1888  
**Email:** info@beyes.ca  
**Web:** www.beyesdental.com



**Lotus NL B.V.**  
Koningin Julianaplein 10, le Verd,  
2595AA, The Hague,  
Netherlands  
**Email:** info@lotusnl.com

## Your Dealer for Beyes Products



Scan the QR code  
for more information

Printed in Canada  
File #: ENB056R1  
05.16.25

© Beyes Canada Inc 2025. All Rights Reserved.  
Specifications are subject to change without notice.  
All brands are holders of their respective trademarks.  
All Beyes products are manufactured in strict compliance  
with Health Canada regulations ensuring quality.  
Manufacturing facility is ISO 13485 certified under the  
Medical Device Single Audit Program (MDSAP).